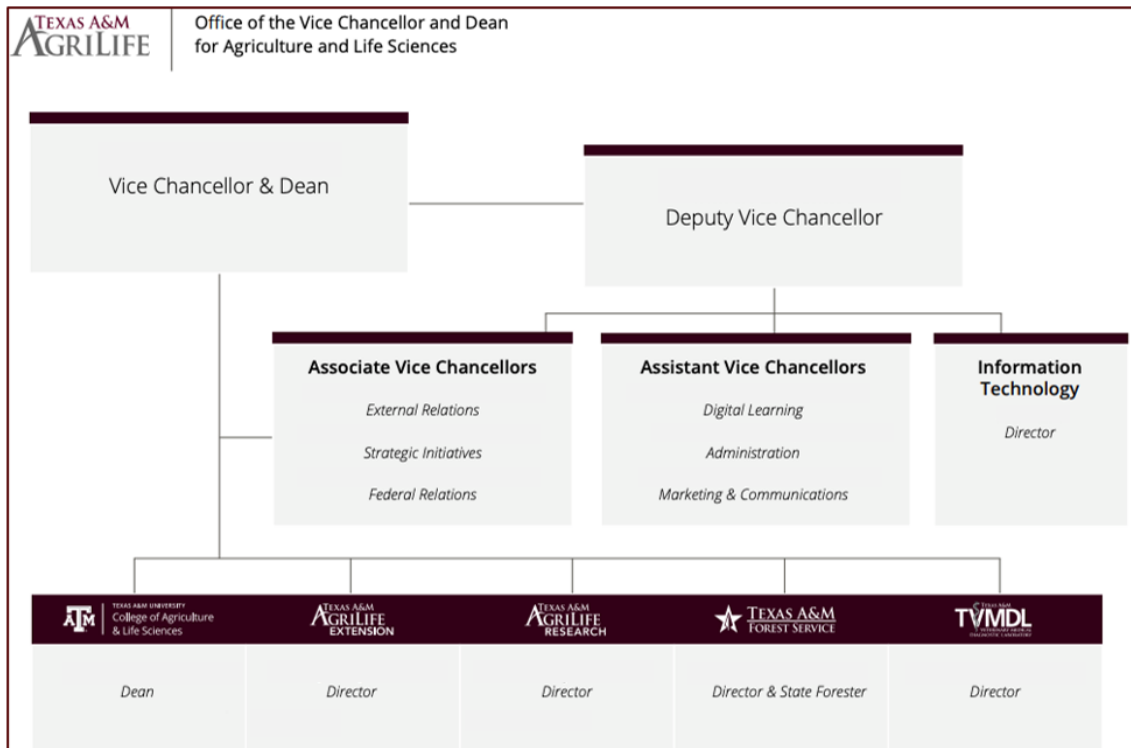


Take this Texas A&M AgriLife organizational chart, for example. Using the options, it would be like this:

1. The first option is to provide a short alt text and a link near the image, like in the example below.



*An organizational chart of the Office of the Vice Chancellor and Dean for Agriculture and Life Sciences* [insert web link to long description of image here]

2. The second option is to include the location of a long description in the alt attribute. The alt attribute can be "An organizational chart of the Office of the Vice Chancellor and Dean for Agriculture and Life Sciences. A long description is located below the image."

Long description text example:

*"The chart of the Office of the Vice Chancellor and Dean for Agriculture and Life Sciences mainly shows the organizational relationship. The structure of the chart presented on the image:*

- *[Insert name here] is the Vice Chancellor and Dean, the Dean of Texas A&M College of Agriculture and Life Sciences and the Director of Texas A&M AgriLife Research, working with [insert name here], the Director of Texas A&M AgriLife Extension, with [insert name here], the Director of Texas A&M Forest Service and with [insert name here], the Director of TVMDL.*
- *[Insert name here] is the Deputy Vice Chancellor, supervising:*
  - *[Insert name here], Associate Vice Chancellor of External Relations*
  - *[Insert name here], Associate Vice Chancellor of Strategic Initiatives*
  - *[Insert name here], Associate Vice Chancellor of federal Relations*
  - *[Insert name here], Assistant Vice Chancellor of Digital Education*
  - *[Insert name here], Assistant Vice Chancellor of Administration*
  - *[Insert name here], Assistant Vice Chancellor of Marketing & Communication*
  - *[Insert name here], Director of Information Technology”*